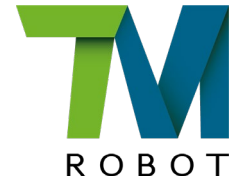




2025 Q4 Financial Results

TECHMAN ROBOT INC.



4585.TW

March 18, 2026

Safe Harbor Notice

This presentation contains forward looking statements and is subject to significant risks and uncertainties. Actual results may differ materially from those in the forward looking statements.

2025 Q4 Income Statement

UNIT : NT\$'000

	2025 Q4	2025 Q3	2024 Q3
Net Sales	475,354	455,413	322,105
Gross Profit	240,644	228,368	171,067
%	50.6%	50.2%	53.1%
Operating Expenses	213,227	218,469	181,370
Operating Profit	27,417	9,899	(10,303)
%	5.8%	2.2%	(3.2%)
Non-Operating Income	43,014	32,171	18,420
Profit Before Tax	70,431	42,070	8,117
%	14.8%	9.2%	2.5%
Income Tax	7,265	5,154	(197)
Profit After Tax	63,166	36,916	8,314
%	13.3%	8.1%	2.6%
Basic EPS (in NT\$)	0.65	0.41	0.09

Year 2025 Income Statement

UNIT : NT\$'000

Items	Y2025	Y2024	YoY
Net Sales	1,822,095	1,481,037	23%
Gross Profit	928,998	761,223	22%
%	51.0%	51.4%	
Operating Expenses	817,873	739,578	11%
Operating Profit	111,125	21,645	413%
%	6.1%	1.46%	
Non-Operating Income	41,463	85,090	-51%
Profit Before Tax	152,588	106,735	43%
%	8.4%	7.2%	
Income Tax	16,218	12,960	
Profit After Tax	136,370	93,775	45%
%	7.5%	6.3%	
Basic EPS (in NT\$)	1.46	1.04	40%

2025/12/31 Balance Sheet - Assets

UNIT : NT\$'000

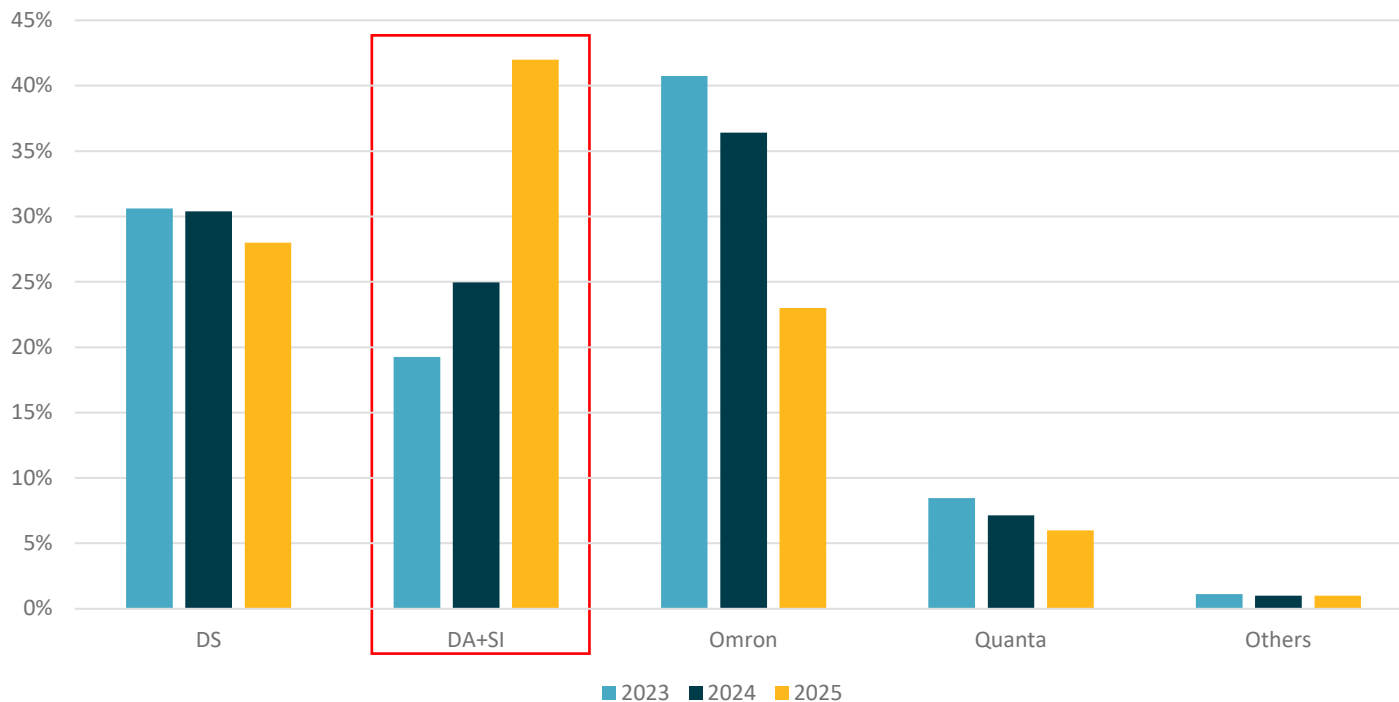
Account	2025/12/31	2025/09/30	2024/12/31
Current Assets	5,919,580	6,699,797	1,749,738
Cash and cash equivalents	343,042	1,287,396	312,477
Financial assets – current	4,740,284	4,582,757	667,095
Notes receivable and Account receivable, net	319,009	325,324	252,484
Inventories	466,575	450,178	487,688
Other current assets	50,670	54,142	29,994
Property, plant and equipment	41,677	44,306	51,827
Other non-current financial assets	1,660,465	548,922	537,706
Other non-current assets	127,614	158,918	132,641
Total assets	7,749,336	7,451,943	2,471,912

2025/12/31 Balance Sheet – Liabilities & Equities

UNIT : NT\$'000

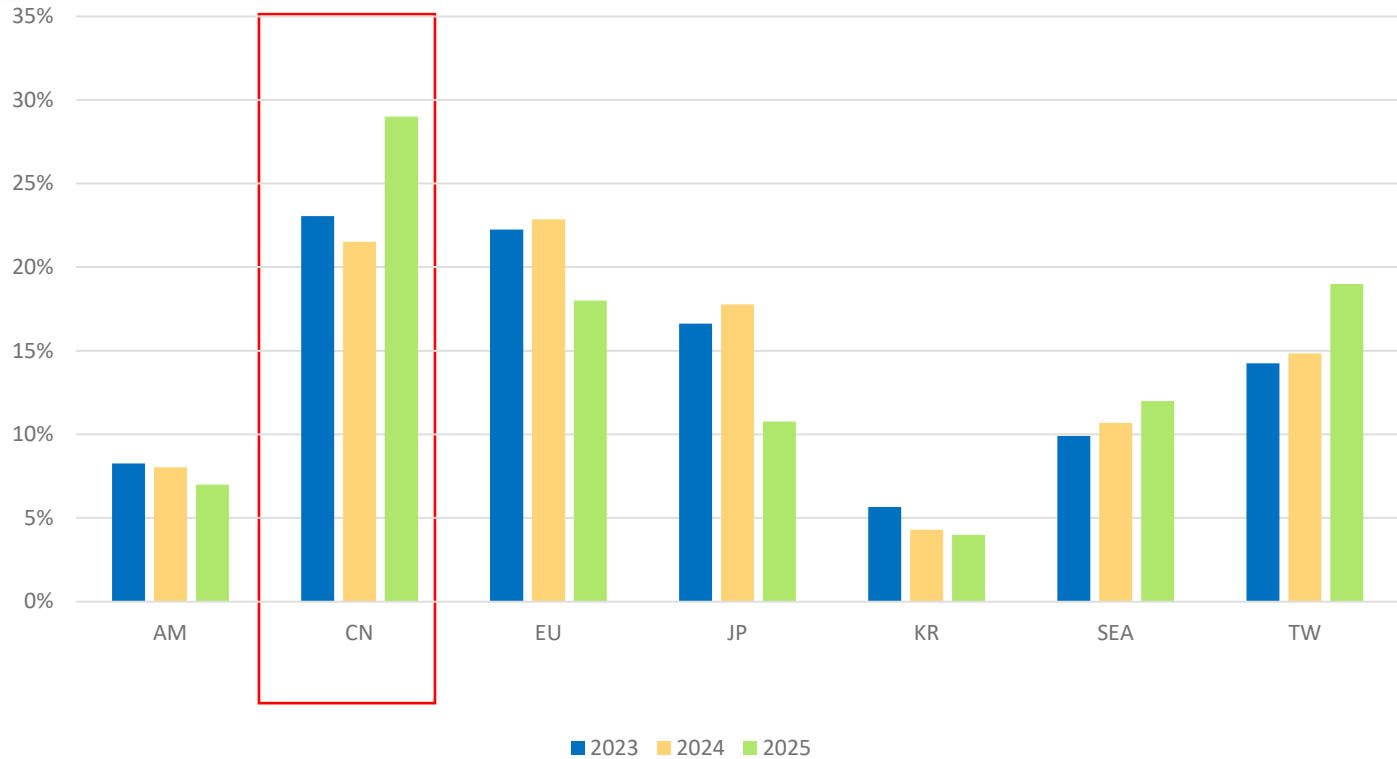
Account	2025/12/31	2025/9/30	2024/12/31
Current liabilities	848,776	706,054	642,250
Short term Debt & Financial Liability	50,417	100,706	-
Contract Liability	182,246	116,340	122,922
Notes and accounts payable	245,115	193,000	205,256
Other current liabilities	370,998	296,008	314,072
Non-current liabilities	29,365	37,663	57,428
Total liabilities	878,141	743,717	699,678
Equity			
Ordinary share	1,028,000	1,028,000	900,000
Capital surplus	5,347,426	5,346,661	610,417
Retained earnings & Other equity interest	495,769	333,565	261,817
Total Equity	6,871,195	6,708,226	1,772,234
Total liabilities and equity	7,749,336	7,451,943	2,471,912

Sales by Channels



DS: Distributors DA: Direct Customers SI: System Integrators

Sales by Regions



From Vision to Action

Leveraging a decade of expertise in Vision & AI to deliver truly deployment-ready smart systems



SEE

See

Perceiving the real world
through AI Vision



THINK

Think

Making intelligent decisions
driven by AI models



ACT

Act

Executing tasks in real-
time via robotic control

Bringing AI to the frontline: Solving problems, Creating value.

Techman Robot Enables Physical AI with Practical Design

TM Xplore I is a collaborative, intelligent robot solution fully integrated with ecosystem partner technologies.

Data
Collection

Data
Generation

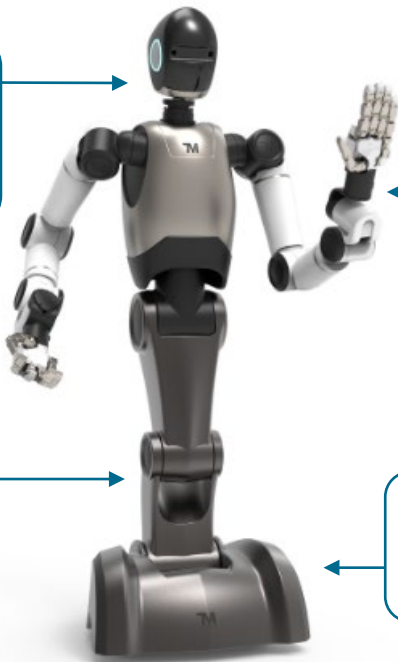
Model
Fine-tuning

Model
Validation

Model
Deployment

Sufficient Sensing

Multi-view Vision for Perceptive Recognition. Force sensing for contact-manipulation.



Collaborative Manipulation

Cover Unstructured Behavior of Physical AI Skills.

Whole Body Control

Expanding Workspace to learn human-like skills.

Wheeled Mobility

Focus on Manipulation task learning and power efficiency.

Ecosystem



NVIDIA

Embedded
Jetson Platform



Isaac ROS
Support

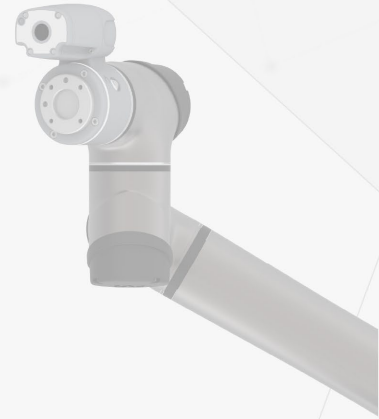
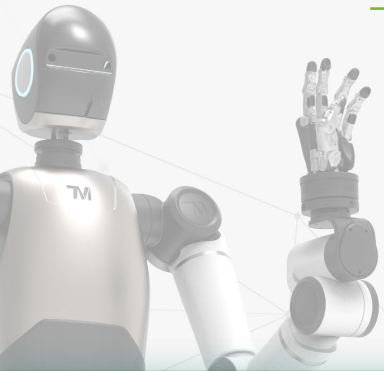


Custom
AI Deployment

See · Think · Act

Q&A

ir@tm-robot.com



See · Think · Act

The image features a central glowing green ring with a blue-to-green gradient, surrounded by a field of small white dots. On the left, a white wireframe hand reaches towards the ring. On the right, a grey industrial robotic arm is positioned. The background is a dark, semi-transparent image of a factory with multiple robotic arms. The text 'THANK YOU' is centered in a bold, green, sans-serif font.

THANK YOU